

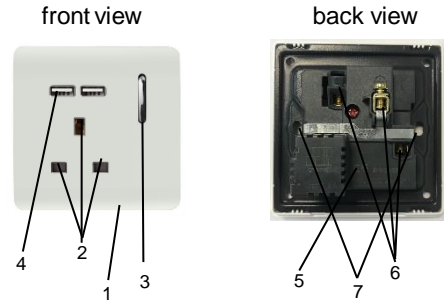


## SKT13USB Wiring Instructions 1 Gang 13 Amp Plug Socket with USB

Please thoroughly read these instructions carefully before starting any electrical work & retain them for future reference. Install this product in accordance with the latest IEE Wiring Regulations. *If in doubt, please consult a qualified electrician.*

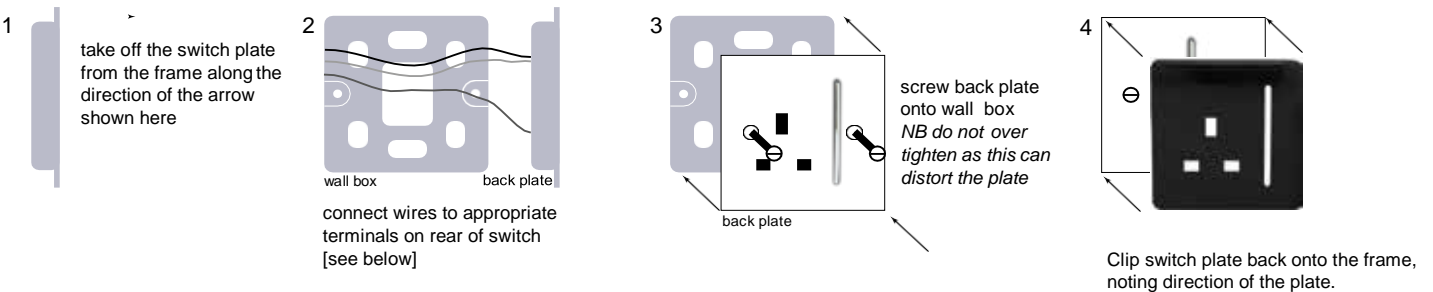
- To fit:
- always disconnect the mains before starting
  - ensure cable used is of the correct rating & type
  - familiarise yourself carefully with the location of the terminal connectors before wiring
  - follow diagram below & ensure no bar wires protrude from the terminals
  - screw frame into backbox in wall
  - clip switch plate back onto frame for screwless finish
- re-connect the mains supply

- To avoid tarnishing:
- do not fit to freshly plastered or damp surfaces
  - do not use masking tape



- |                 |                        |
|-----------------|------------------------|
| 1 switch plate  | 5 circuit box          |
| 2 plug socket   | 6 connecting terminals |
| 3 switch button | 7 Fixing screw         |
| 4 USB Ports     |                        |

How Trendiswitch creates the illusion of a screwless designer switch  
*applies to single and double plates in all colours and styles*



- plate fixes firmly to substrate & may require screwdriver to separate
- different screwless products have different installation depths and back [pattress] box requirements eg. dimmer min 35mm depth, rocker min 18mm depth

### Connecting wires to the appropriate terminals

