

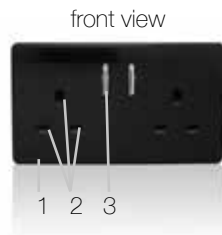


# SKT213 Wiring Instructions

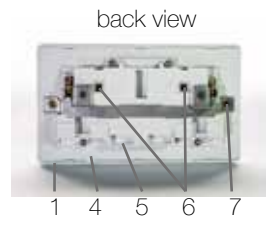
## 2 Gang 13 Amp Short Switched Plug Socket, for every colour plate

Please thoroughly read these instructions carefully before starting any electrical work & retain them for future reference. Install this product in accordance with the latest IEE Wiring Regulations. *If in doubt, please consult a qualified electrician.*

- To fit:
- always disconnect the mains before starting
  - ensure cable used is of the correct rating & type
  - familiarise yourself carefully with the location of the terminal connectors before wiring
  - follow diagram below & ensure no bar wires protrude from the terminals
  - screw frame into backbox in wall
  - clip switch plate back onto frame for screwless finish
  - re-connect the mains supply



- 1 switch plate
- 2 plug socket
- 3 switch button
- 4 frame

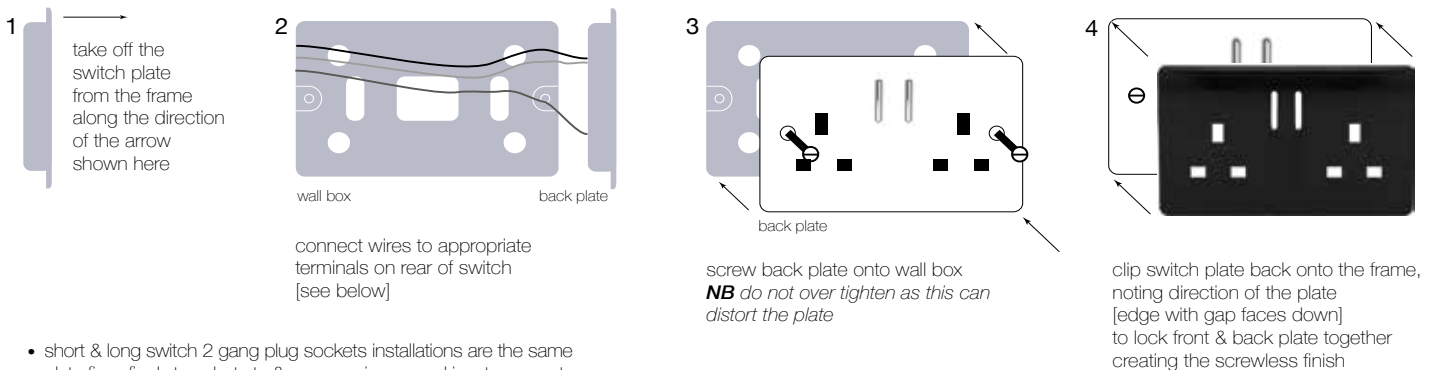


- 5 circuit box
- 6 connecting terminals
- 7 screw

- To avoid tarnishing:
- do not fit to freshly plastered or damp surfaces
  - do not use masking tape

### How Trendiswitch creates the illusion of a screwless designer switch

*applies to single and double plates in all colours and styles*



- short & long switch 2 gang plug sockets installations are the same
- plate fixes firmly to substrate & may require screwdriver to separate
- different screwless products have different installation depths and back [pattress] box requirements eg. dimmer min 35mm depth, rocker min 18mm depth

### Connecting wires to the appropriate terminals

