



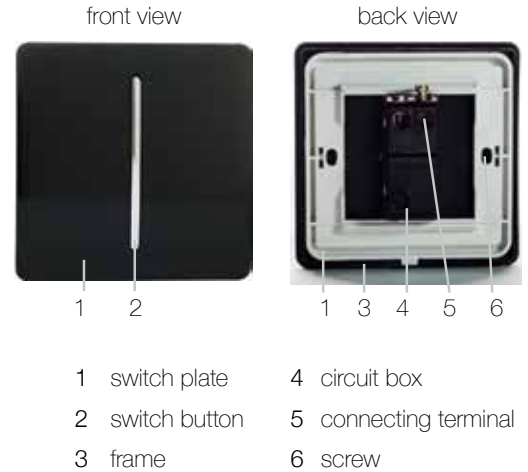
SS9 Wiring Instructions

1 Gang Intermediate 10 Amp Rocker Light Switch, for every colour plate

Please thoroughly read these instructions carefully before starting any electrical work & retain them for future reference. Install this product in accordance with the latest IEE Wiring Regulations. *If in doubt, please consult a qualified electrician.*

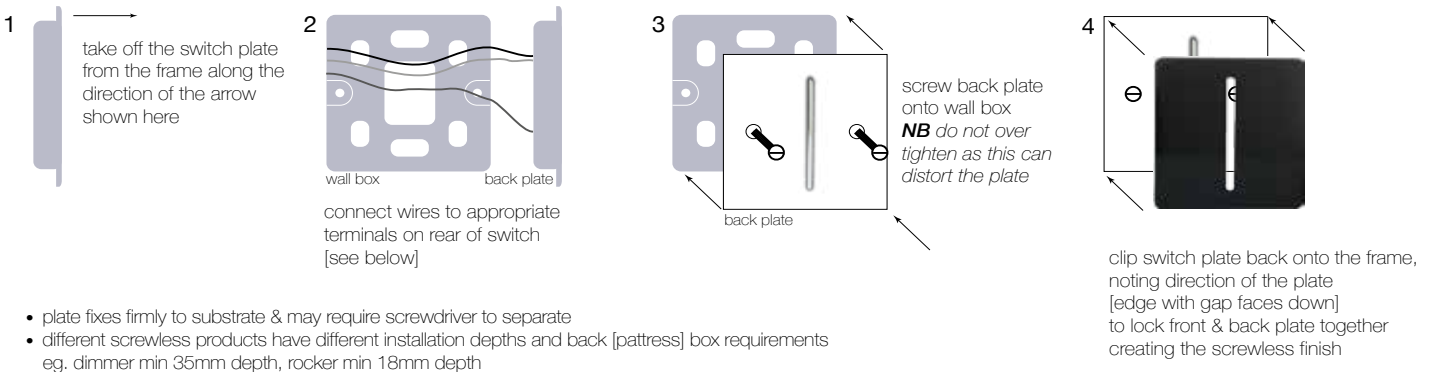
- To fit:
- always disconnect the mains before starting
 - ensure cable used is of the correct rating & type
 - familiarise yourself carefully with the location of the terminal connectors before wiring
 - follow diagram below & ensure no bar wires protrude from the terminals
 - product does not need to be earthed due to the plastic face plate
 - screw frame into backbox in wall
 - clip switch plate back onto frame for screwless finish
 - re-connect the mains supply

- To avoid tarnishing:
- do not fit onto freshly plastered or damp surfaces
 - do not use masking tape – there really is no need with the Trendiswitch® screwless range!



How Trendiswitch® creates the illusion of a screwless designer switch

applies to single and double plates in all colours and styles



Connecting wires to the appropriate terminals

